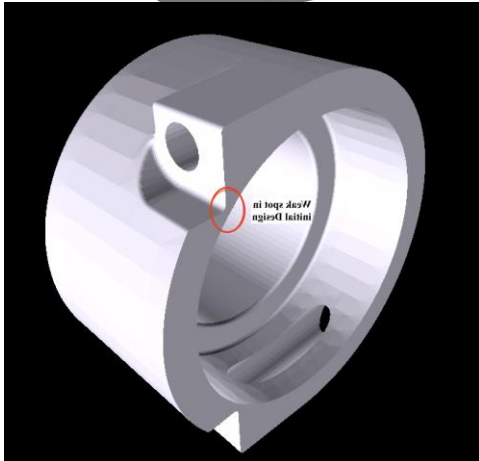
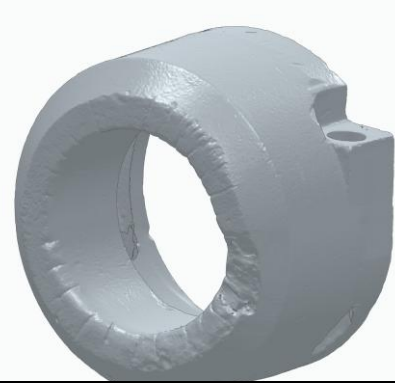




## *From inspiration to Castings*

**Reverse Engineering  
From existing parts**



Our customer had a lost shipment in transit and needed castings ASAP. No print existed. They provided us with a scrap casting to start.

We laser scanned the scrap casting and obtained some critical dimensions from the mating part.

The Digital scan was cleaned up to include critical dimensions and correct a design flaw.

Patterns were made from the new CAD

Castings were made and checked for fit against a customer supplied mating part.

Project start to finish was 7 weeks and included both spectrographic analysis of the metal and a design review to correct a weak feature in the original design.